



Fresh Bros

Sample 725-021224-018-1

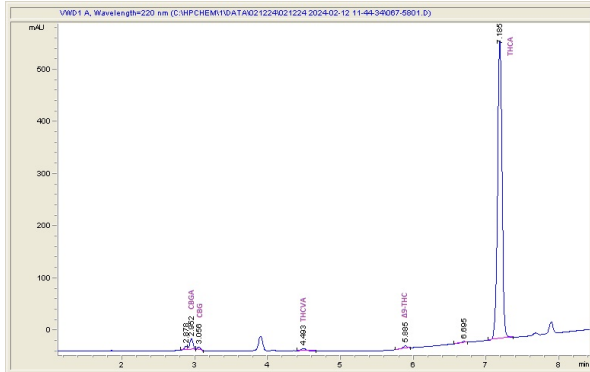
Vanilla Cream Pie - Hybrid

Sample Submitted: 06-17-2024; Report Date: 06-21-2024

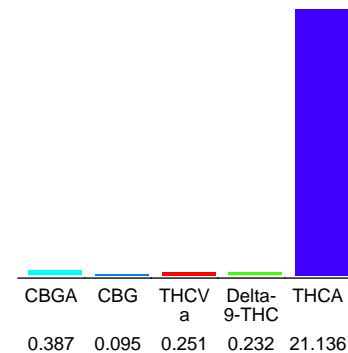
Vanilla Cream Pie - Hybrid

Plant Material: Hemp Flower

Chromatogram



Cannabinoid Profile



Cannabinoid Profile by HPLC

0.23%
Delta-9-THC

0.00%
CBD

22.10%
Total Cannabinoids

| Cannabinoid | % wt | mg/g |
|-----------------------------|--------------|---------------|
| CBGA | 0.387 | 3.87 |
| CBG | 0.095 | 0.95 |
| THCVa | 0.251 | 2.51 |
| Delta-9-THC | 0.232 | 2.32 |
| THCA | 21.14 | 211.36 |
| Total Cannabinoids | 22.10 | 221.0 |
| Calculated Total THC | 18.77 | 187.68 |
| Calculated CBD Yield | 0.00 | 0.00 |

Calculated Total THC = Delta-9-THC + 0.877 * THCA
Calculated Maximum CBD Yield = CBD + 0.877 * CBDA

Marin Analytics, LLC

250 Bel Marin Keys Blvd, Suite D4
Novato, CA 94949

833-321-TEST / info@marinanalytics.com

Mike Clemmons
Lab Manager